

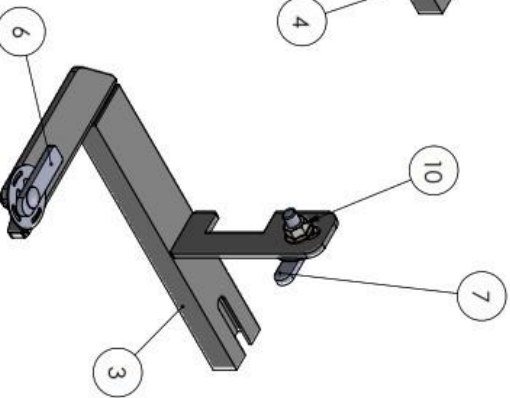
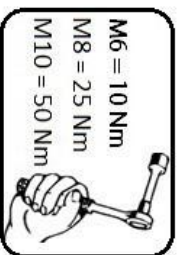
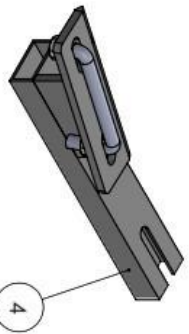
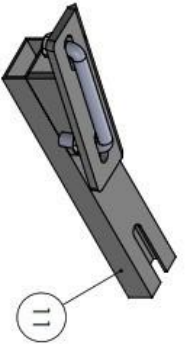


**Fiat (E) - Ducato (2006+)**  
**Peugeot (E) - Boxer (2006+)**  
**Citroen (E) - Jumper (2006+)**  
**Opel (E) - Movano (2022+)**

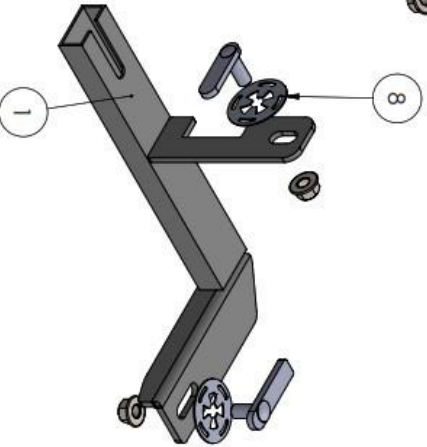
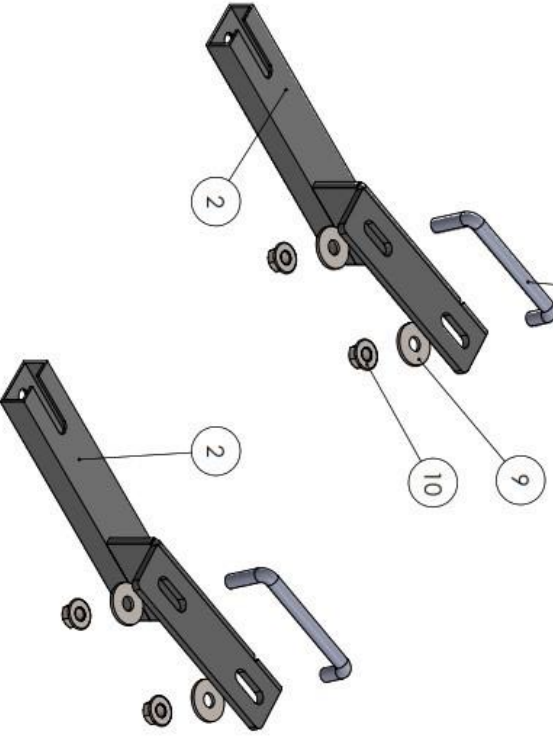
**OR / INSTALLATION GUIDE**



60 min.



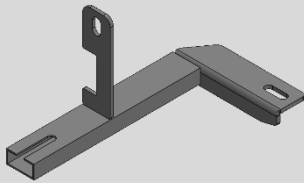
FRONT



ITEM NO.	PART NUMBER	QTY.
1	Front Bracket_Passenger	1
2	Center-Rear Bracket_Passenger	2
3	Front Bracket_Driver	1
4	Center-Rear Bracket_Passenger	1
5	U Bolt	4
6	HTC 232 - M10x20	2
7	HTC 243 - M10x25(4x12x50)	2
8	HTC 269 - CLIPS (M10)	4
9	M10 - Washer	8
10	M10 Flange Nut	12

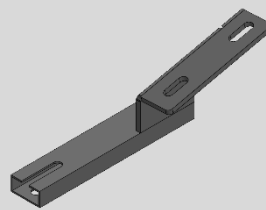


# Box Contents



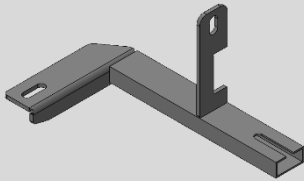
1

**PASSENGER FRONT BRACKET**  
x1



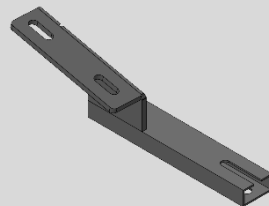
2

**PASSENGER CENTER-REAR BRACKET**  
x2



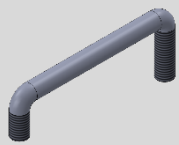
3

**DRIVER FRONT BRACKET**  
x1



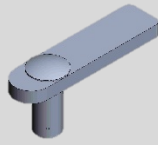
4

**DRIVER CENTER-REAR BRACKET**  
x2



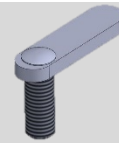
5

**U BOLT**  
x4



6

**HTC 232  
(M10x20)**  
x2



7

**HTC 243  
(M10x25)**  
x2



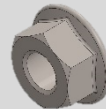
8

**HTC 269  
CLIPS M10**  
x4



9

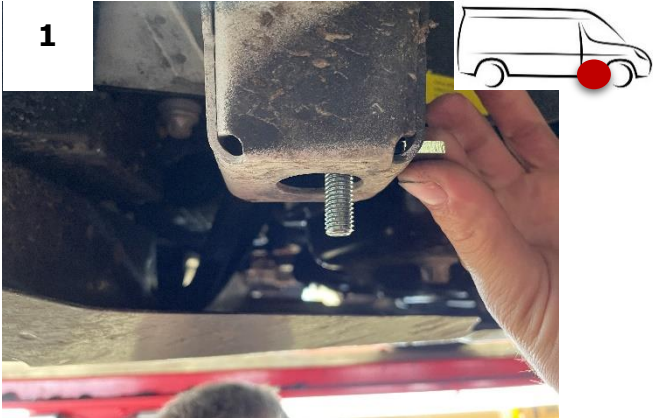
**M10 WASHER**  
x8



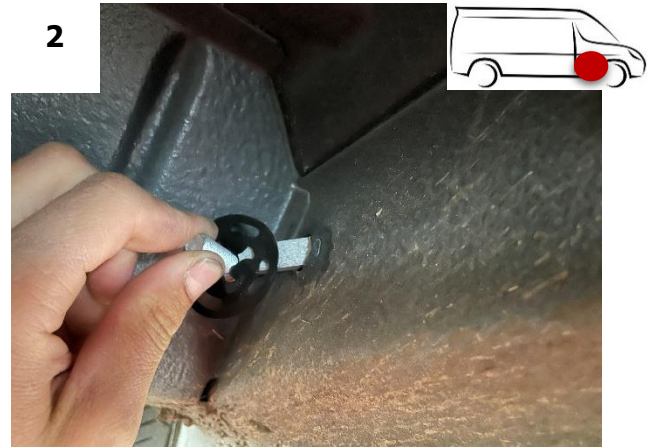
10

**M10 FLANGE NUT**  
x12

# Brackets Assembly



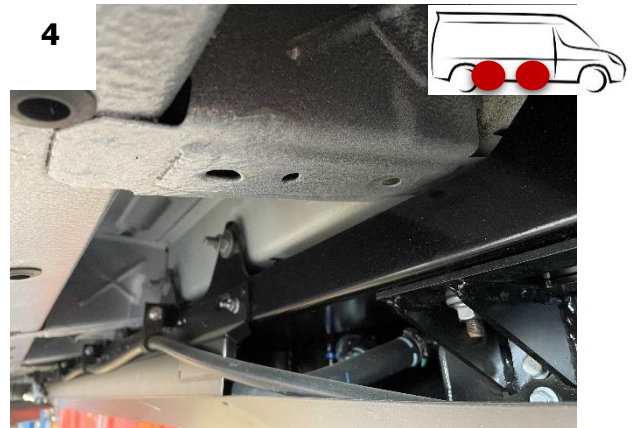
Install the HTC 232.



Install the HTC 243.



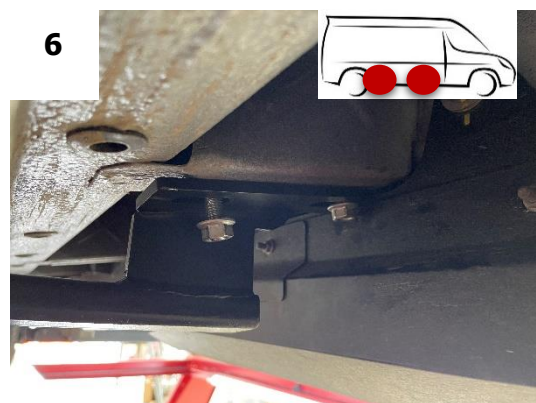
Bracket is mounted as shown.



U bolt junction area.



U bolt is connected as shown.



Place bracket on the U bolt