

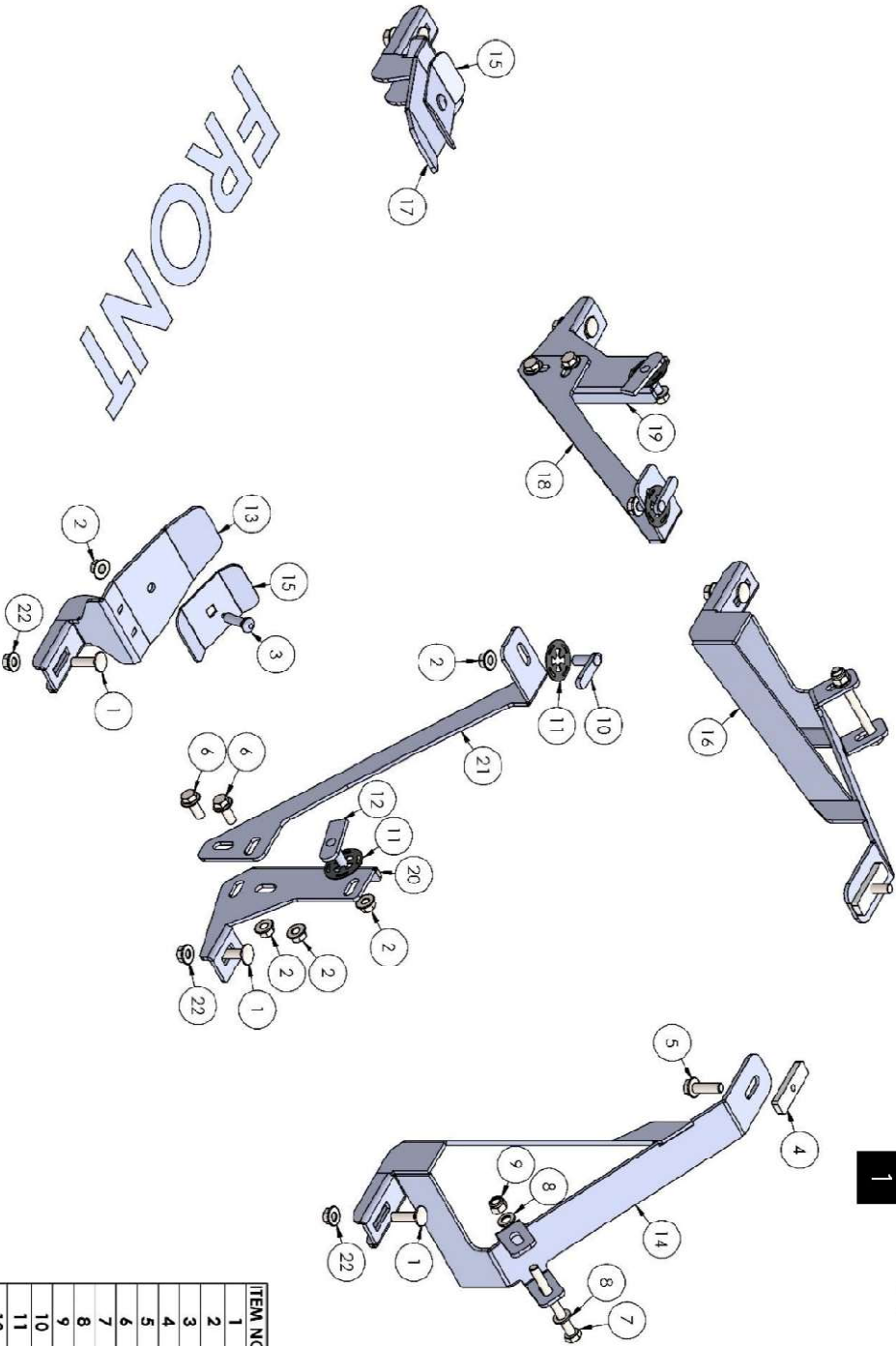
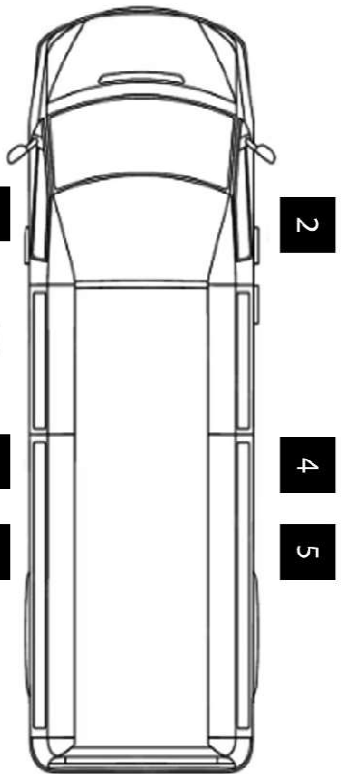


IVECO DAILY [18+] 3520 / 4100

188-189-190 KIT OR

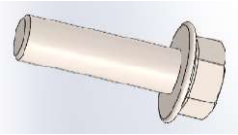
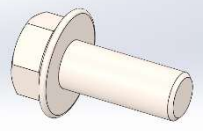
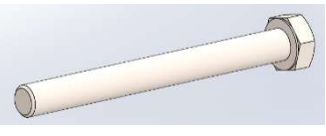
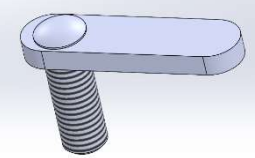
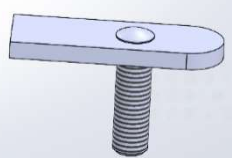
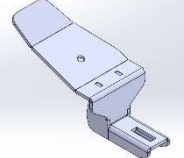
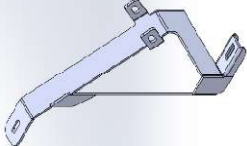
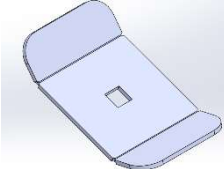
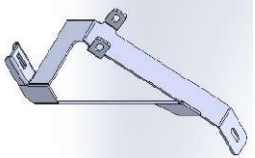
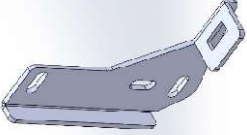
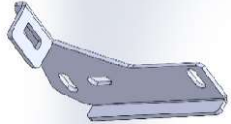
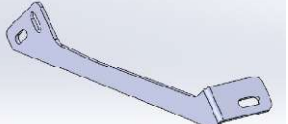
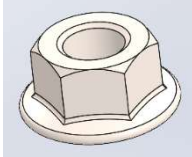
INSTALLATION GUIDE

ITEM NO.	PART NAME	QNT.
1	ISO 8678- M10x35-28-N(STAINLESS)	6
2	Hexagon Flange Nut DIN 6923 - M10 - N	10
3	SPECIAL BOLT (Bombe Kafa-Teili) M10X40	2
4	HTC OR4	2
5	DIN 6921 - M10 x 35 x 35- N	2
6	DIN 6921 - M10 x 25 x 25- N	4
7	DIN EN 24016 - M10 x 100 x 26- WN	2
8	Washer DIN 125 - A 10.5 - 300HV	4
9	DIN EN ISO 7040 - M10 - N	2
10	HTC 243 - M10x25(4x12x50)	2
11	HTC 249 - Clips (M10)	4
12	HTC 238 - M10x25(4x20x60)	2



FRONT

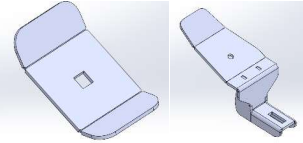
ITEM NO.	PART NAME	QNT.
1	ISO 8678- M10x35-28-N(STAINLESS)	6
2	Hexagon Flange Nut DIN 6923 - M10 - N	10
3	SPECIAL BOLT (Bombe Kafa-Teili) M10X40	2
4	HTC OR4	2
5	DIN 6921 - M10 x 35 x 35- N	2
6	DIN 6921 - M10 x 25 x 25- N	4
7	DIN EN 24016 - M10 x 100 x 26- WN	2
8	Washer DIN 125 - A 10.5 - 300HV	4
9	DIN EN ISO 7040 - M10 - N	2
10	HTC 243 - M10x25(4x12x50)	2
11	HTC 249 - Clips (M10)	4
12	HTC 238 - M10x25(4x20x60)	2

<p>(1) ISO 8678 – M10X35 (STAINLESS)</p> 	<p>(2) HEXA FLANGE NUT M10</p> 	<p>(3) CARRIAGE BOLT M10X40</p> 
<p>(4) HTC OR4</p> 	<p>(5) DIN 6921 M10X35</p> 	<p>(6) DIN 6921 M10X25</p> 
<p>(7) DIN E 24016 M10X100</p> 	<p>(8) WASHER M10</p> 	<p>(9) DIN EN ISO 7040 M10</p> 
<p>(10) HTC 243 M10X25</p> 	<p>(11) HTC 269 CLIPS M10</p> 	<p>(12) HTC 238 M10X25</p> 
<p>(13) 190 KIT OR front left</p> 	<p>(14) 190 KIT OR rear left</p> 	<p>(15) 190 KIT OR front A2</p> 
<p>(16) 190 KIT OR rear right</p> 	<p>(17) 190 KIT OR front right</p> 	<p>(18) 190 KIT OR center right support</p> 
<p>(19) 190 KIT OR center right bracket</p> 	<p>(20) 190 KIT OR center left bracket</p> 	<p>(21) 190 KIT OR center left support</p> 
<p>(22) Hexa flange Nut M10 (STAINLESS)</p> 		

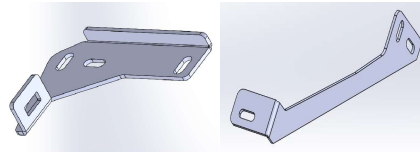
Brackets Assembly



Position 1 & 2



Position 3 & 4



Position 5 & 6

