



# **FORD CUSTOM [23+] VW TRANSPORTER [24+]**

**ATZ**

**INSTALLATION GUIDE**



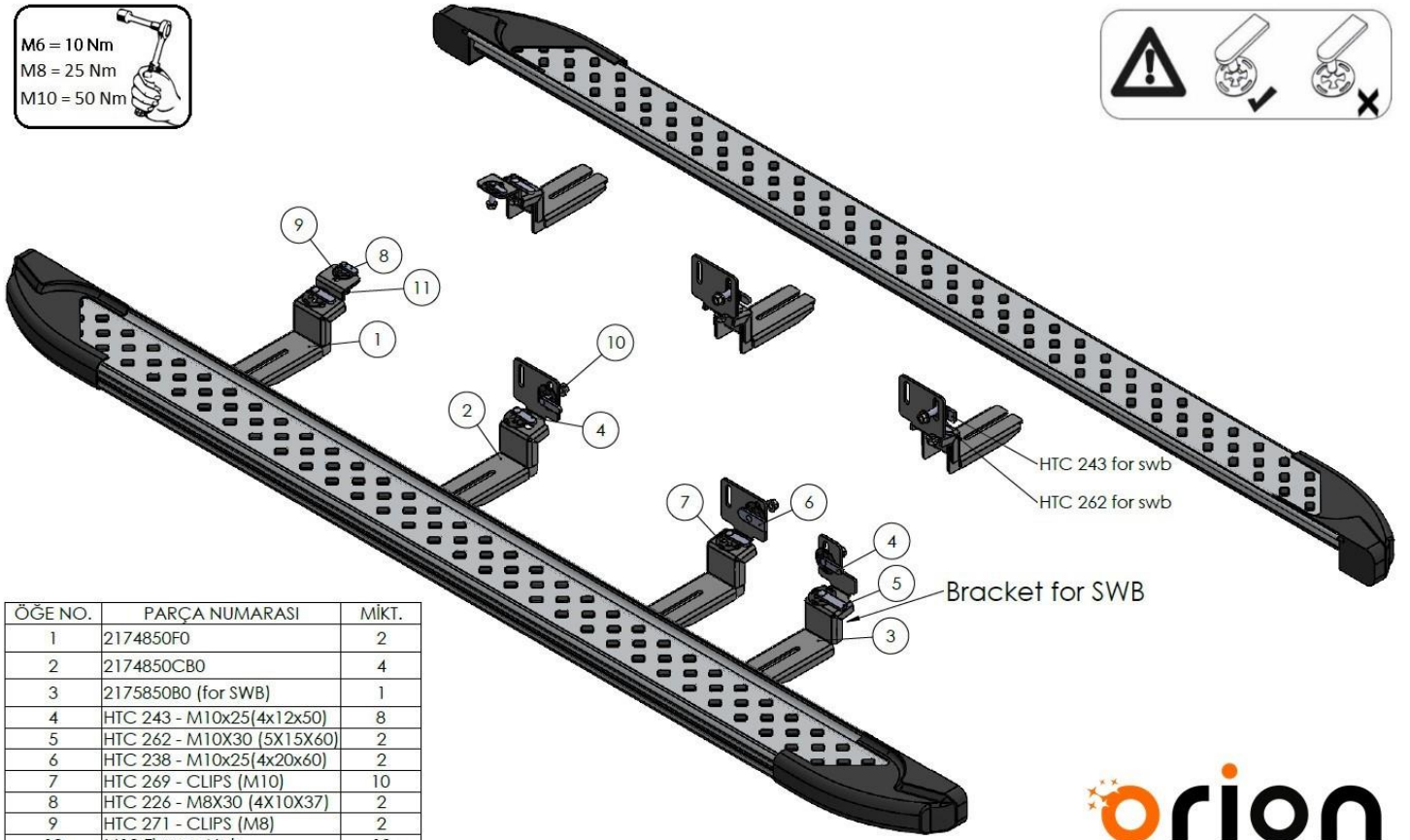
60 min.

# Safety Instructions

- Carefully unpack the product and check whether the product is correct and complete. (Blows, scratches, dents, etc.)
- Two personnel should be present during the assembly process. Perform the assembly process with two people.
- Take all your safety precautions before starting the assembly.
- Take the vehicle to be assembled to the area to be mounted in a suitable and positioned position. (Lift etc.)
- While the vehicle is being taken off the lift, position it parallel to the lift and properly.
- Be sure to supply the tools required for the assembly process in advance.
- Check that all materials are complete and complete by referring to page 3 of the installation manual.
- When attaching the product to the apparatus, the forward, backward / right, left settings should be correct. Care should be taken not to collide with the mat or any other place on the vehicle.
- During the assembly of the product, carefully follow all the steps by carefully following the assembly guide that comes out of the box of the product.
- The product apparatus is designed to assemble to your vehicle without any welding. Do not weld in any way.
- Do not tighten the bolts before aligning the product to the apparatus and the vehicle.
- After making all your adjustments, tighten all the bolts.
- Do not throw away the boxes until the assembly process is completed.
- Finally, when the assembly is finished, make your checks and finish the process and throw the packaging away.

**Note: Our company is not responsible for the problems caused by not following the general safety instructions above.**

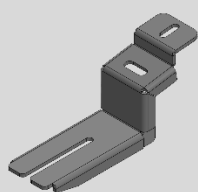
M6 = 10 Nm  
M8 = 25 Nm  
M10 = 50 Nm



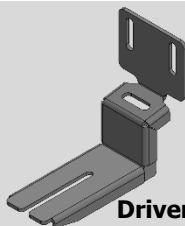
ÖGE NO.	PARÇA NUMARASI	MİKT.
1	2174850F0	2
2	2174850CB0	4
3	2175850B0 (for SWB)	1
4	HTC 243 - M10x25 (4x12x50)	8
5	HTC 262 - M10x30 (5X15X60)	2
6	HTC 238 - M10x25 (4x20x60)	2
7	HTC 269 - CLIPS (M10)	10
8	HTC 226 - M8X30 (4X10X37)	2
9	HTC 271 - CLIPS (M8)	2
10	M10 Flange Nut	10
11	M8 Flange Nut	2

**orion**  
automotive

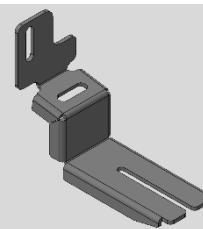
## Box Contents



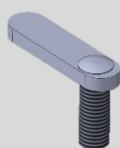
**Driver/Passenger Side  
F0 Bracket  
x2**



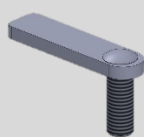
**Driver/Passenger Side  
CB0 Bracket  
x4**



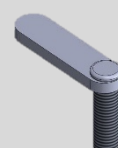
**Driver Side  
B0 Bracket(SWB)  
x1**



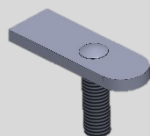
**HTC 243 – M10x25  
(4X12X50)  
x8**



**HTC 262 – M10X30  
(5x15x60)  
x2**



**HTC 226 – M8X30  
(4x10x37)  
x2**



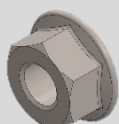
**HTC 238 – M10x25  
(4X20X60)  
x2**



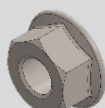
**HTC 269  
M10 CLIPS  
x10**



**HTC 271  
M8 CLIPS  
x2**

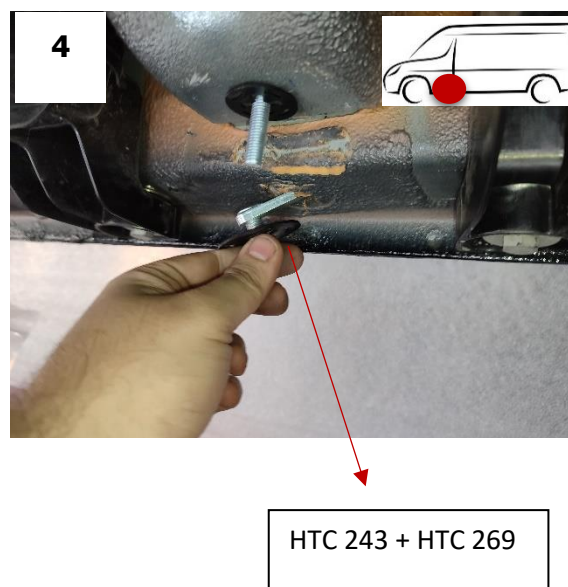
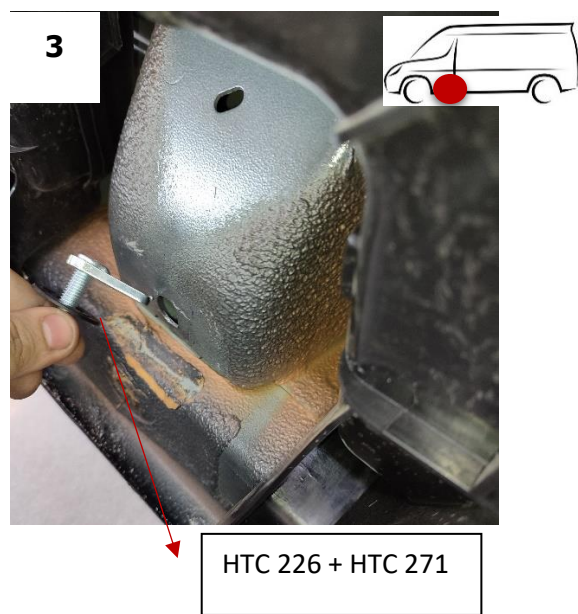
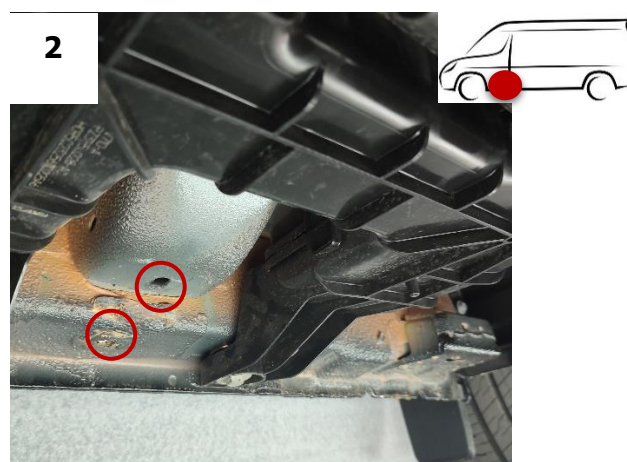


**M10  
FLANGE NUT  
x10**

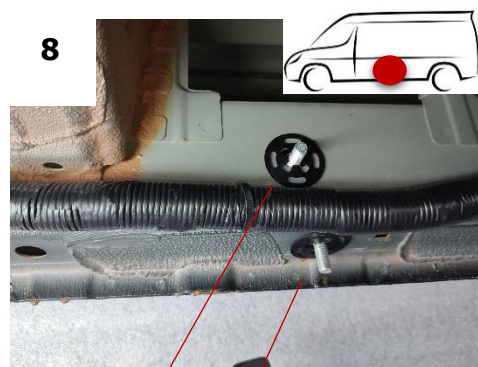
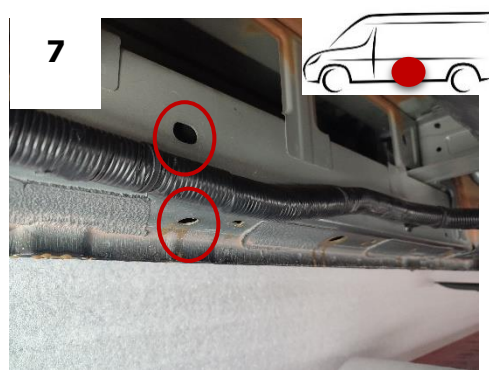
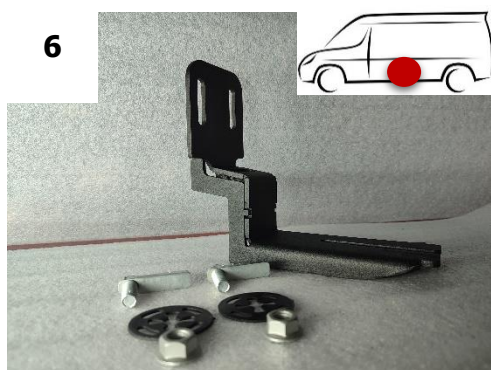


**M8  
FLANGE NUT  
x2**

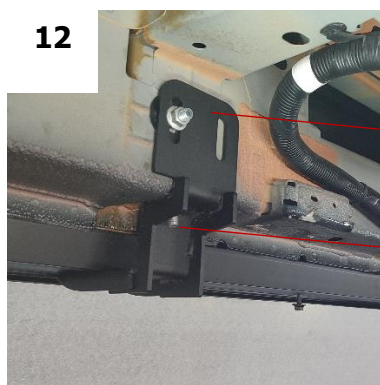
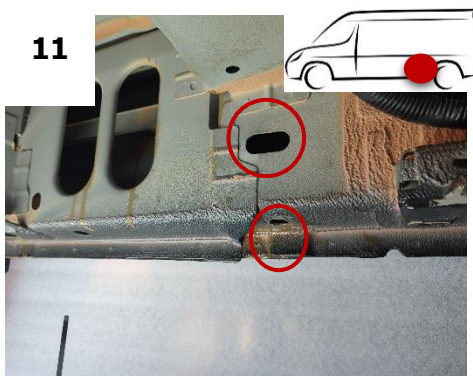
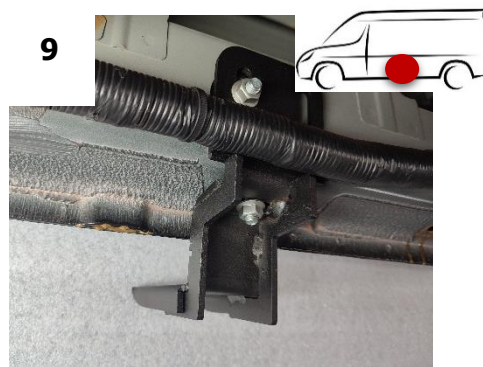
## Brackets Assembly







HTC 243 + HTC 269



HTC 238 + HTC 269

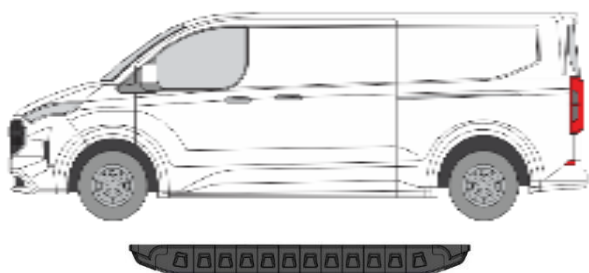
HTC 243 + HTC 269



SWB

**REPEAT FOR OTHER SIDE**

## Side Steps Assembly



***Important! After positioning the step in the appropriate position, tighten the M8 nuts with 25 Nm and the M10 nuts with 50 Nm.***

