



**FORD CUSTOM (23+)**

**VW T7 Transporter (24+)**

**INSTALLATION GUIDE side steps**

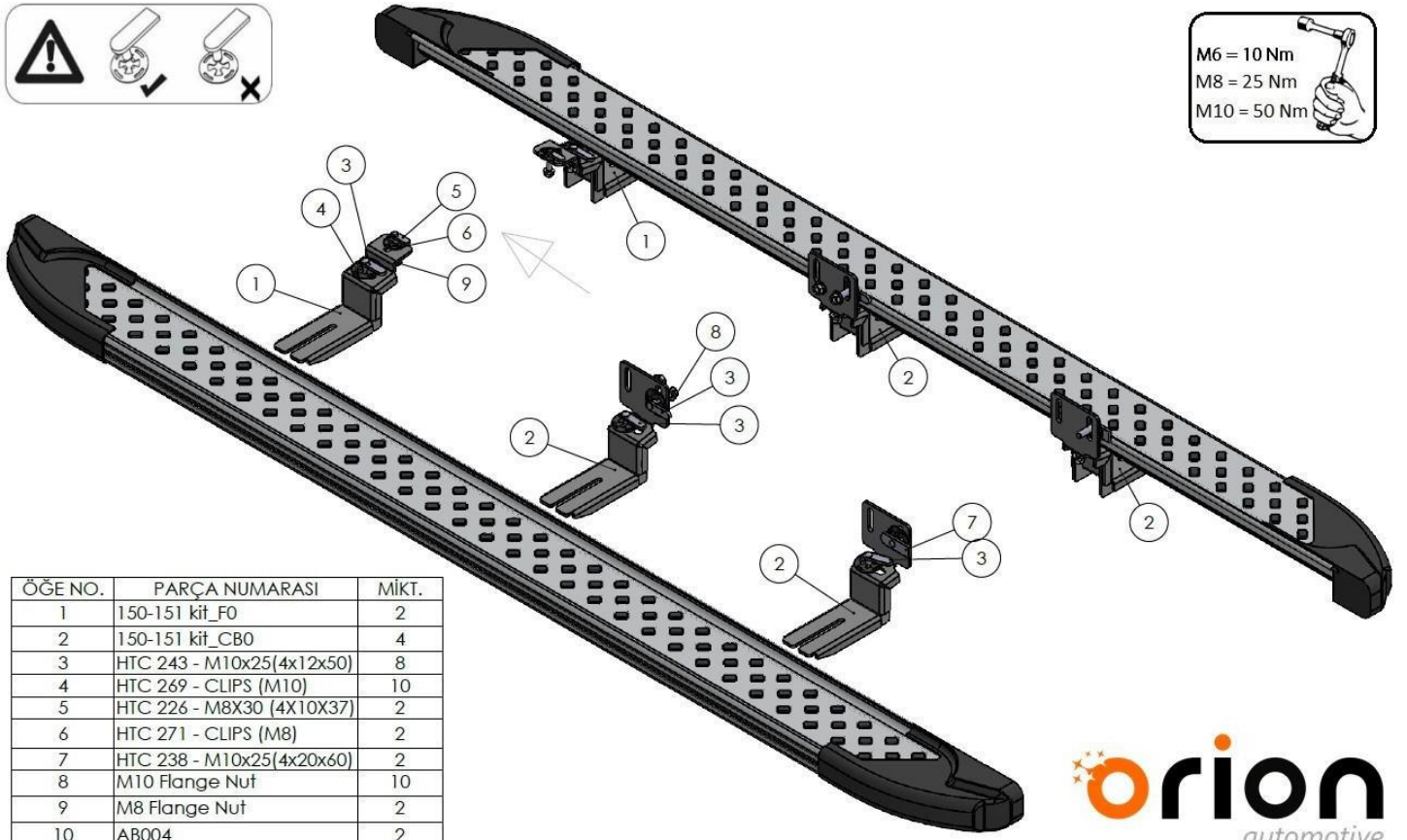
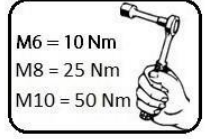


60 min.

FORD CUSTOM 23+

VW T7 Transporter 24+

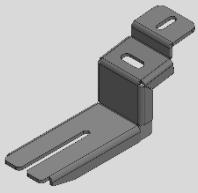
1



ÖĞE NO.	PARÇA NUMARASI	MİKT.
1	150-151 kit_F0	2
2	150-151 kit_CB0	4
3	HTC 243 - M10x25 (4x12x50)	8
4	HTC 269 - CLIPS (M10)	10
5	HTC 226 - M8X30 (4X10X37)	2
6	HTC 271 - CLIPS (M8)	2
7	HTC 238 - M10x25 (4x20x60)	2
8	M10 Flange Nut	10
9	M8 Flange Nut	2
10	AB004	2

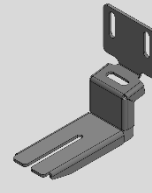
 **orion**  
automotive

# Box Contents



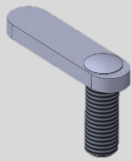
1

**DRIVER/PASSENGER SIDE  
FRONT BRACKET**  
x2



2

**DRIVER/PASSENGER SIDE  
MIDDLE/REAR BRACKET**  
x4



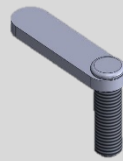
3

**HTC 243 M10x25**  
x8



4

**HTC 269 M10 CLIPS**  
x10



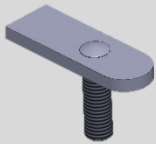
5

**HTC 226 M8x30**  
x2



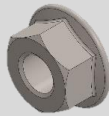
6

**HTC 271 M8 CLIPS**  
x2



7

**HTC 238 – M10x25**  
x2



8

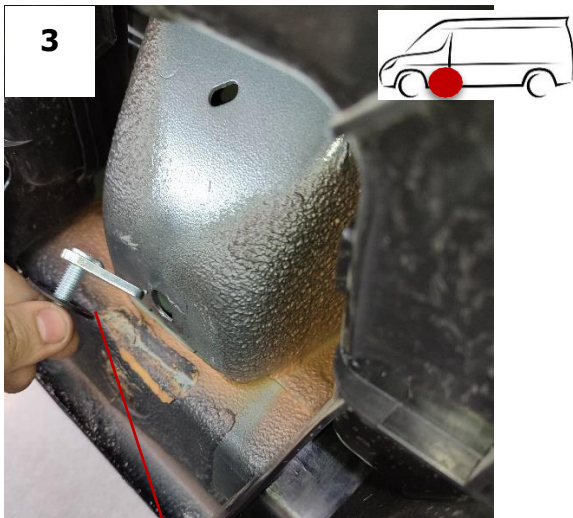
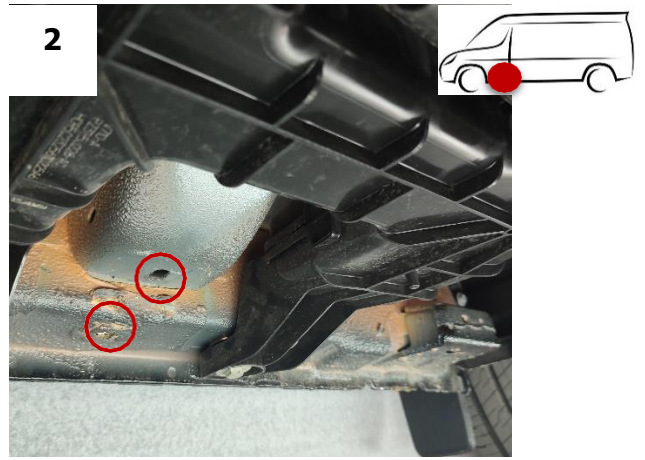
**M10 Flange Nut**  
x10



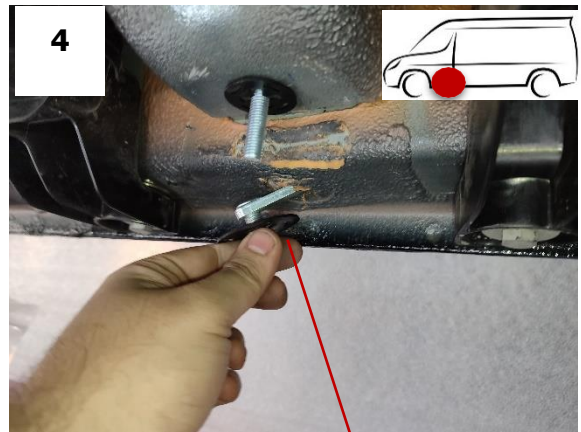
9

**M8 Flange Nut**  
x2

# Brackets Assembly

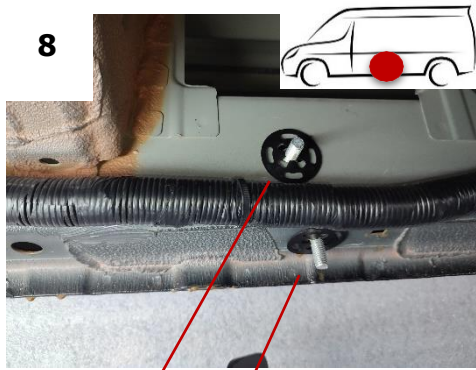
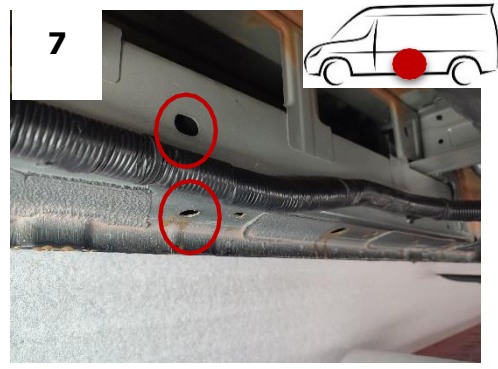
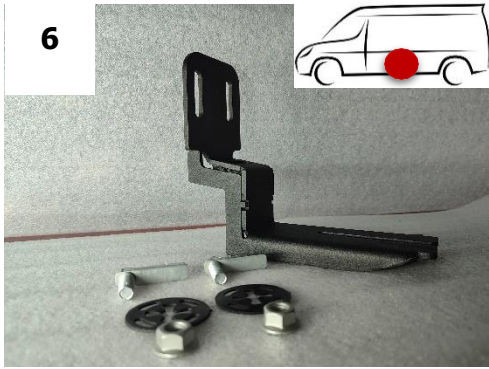


HTC 226 + HTC 271

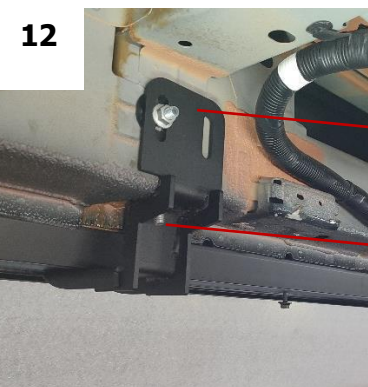
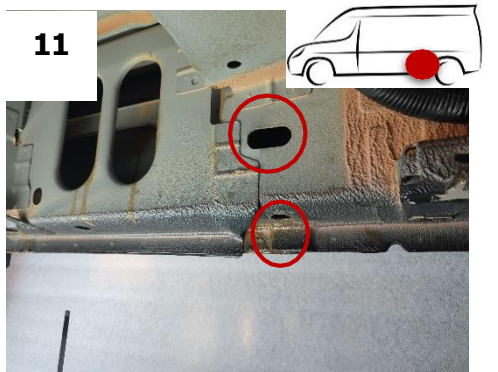
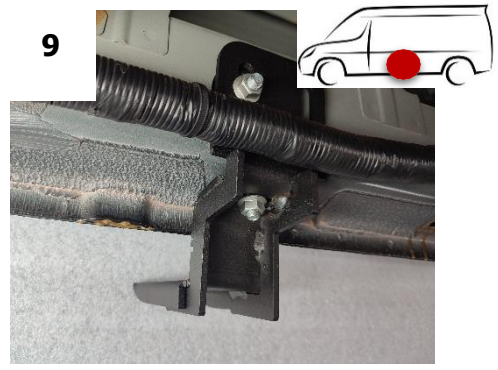


HTC 243 + HTC 269





HTC 243 + HTC 269

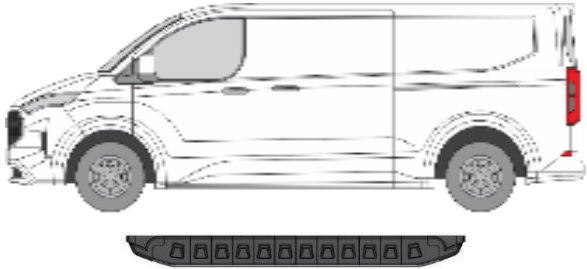


HTC 238 + HTC 269

HTC 243 + HTC 269

**REPEAT FOR OTHER SIDE**

## Side Steps Assembly



***Important! After positioning the step in the appropriate position, tighten the M8 nuts with 25 Nm and***



***the M10 nuts with 50 Nm.***

FORD CUSTOM 23+		VW T7 Transporter 24+	2
-----------------	--	-----------------------	---

FORD CUSTOM 23+

VW T7 Transporter 24+

3